

the ita wegman association
of British Columbia for Curative Education And Social Therapy

glenora's saga

and other stories

december newsletter 2007



the lama's lament:

I guess I cannot complain about Christmas, as I am not a turkey so I better wish you all an early happy Christmas.

As it is now December a newsletter is in order and this year it is up to me to deal with all that. I hope these writings find you well.

The people at the Glenora farm seem happily busy with all kinds of things. I gathered some of the stories listening in on all these

humans chatting away noisily within spitting distance of my marginally peaceful barnyard (as long as that bothersome ram was not disturbing my peace) But I will not further bother you with my annoyances: the hay is not bad, it does not rain all the time like most years (it surely will get worse) and the new pigs seem to behave themselves mostly and don't chase my herd of sheep.

The humans talk about new houses, more humans arriving, the store and this new café, and there is a lot of sawing happening on the farmyard etcetera,

Etcetera. On the next page you can see all the bits I dug up, but now I will rest and chew and clear my head off all that.

Yours truly

saga, the lama

the ita wegman association

of British Columbia for Curative Education And Social Therapy

glenora's saga

what we dug up:

december newsletter 2007

- Page 1 ○ the lamas lament
- Page 2 ○ What we dug up
- poem
- Page 3 ○ new people
- welcome to the wong family
- Page 4 ○ the millshed
- Page 5 ○ notes from a backroom
- Page 6 ○ the green snake (play)
- Page 7 ○ and other stories
- Page 8 ○ the new houses
- Page 9 ○ the new houses
- Page 10 ○ coworker experiences
- Page 11 ○ looking into my short term past and the future
- Page 12 ○ newsletter info

poem *Misty day*

*The wind blows in a thick mist
A cool breeze that I cannot resist
As the sky becomes more dark
The night time comes in and plays its part
The thick night time fog hangs above the snow
So heavy you can't see where it goes
As the scenery is dark and gloomy
The moon is nowhere to be seen, a house is the
only thing in scenery
The next morning the sky keeps swirling and
thriving
Yet again the sky's sun is not shining
Let's hope for a good Christmas
That the sun comes out of this mist*

By Faith Sechley

the ita wegman association

of British Columbia for Curative Education And Social Therapy

glenora's saga

new people

people come, people go. i would like to introduce some new people that joined glenora farm since the last



Raphaella recently came to Feirefis from Germany and helps out the houseparents there.



Alex is very busy organising things in the wild wing of the main house



Frank helps out in Feirefis, but will leave for Germany just before Christmas



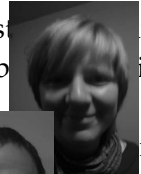
Julian is visiting from the U.S.A.



Craig recently joined part of our day program

december newsletter 2007

Christina lives in the main house. But is most in the garden and farm . She is from Germany. She b



iver with her

Oliver joined Christina and now is w



arden and the farm

welcome to the wong family

On December 26th Huang Xiao Xing (Harry Wong), Zhang Li and their three children Huang Shi Yu, Huang Shi Ming and Huang Shi Hong will arrive to begin six months of living and working at Glenora Farm. Harry and his wife started the first Waldorf school in China located in the city of Chengdu.. Now they are looking to immigrate to Canada bringing with them a wealth of experience and training in Waldorf education, having lived and worked at the Rudolf Steiner Fellowship Community in Spring Valley, New York. We are all looking forward to their arrival and expansion of the Glenora Farm community.

Lynda Phelps

the ita wegman association

of British Columbia for Curative Education And Social Therapy

glenora's saga

the millshed

the saw mill is now used by Lawrence to produce the beams for the new houses, but nothing goes to waste: the offcuts are processed in the firewood tent to firewood, and the sawdust is used to cover the paths around the farm. The firewood crew also splits other wood with a hydraulic splitter and builds lovely woodpiles all over the place



the mill shed with some off cuts



the sawmill



pathways I am talking about the pathway to the new houses. I have been working on the pathway with other people like Andrew, Faith and Frank and others. I started in the summer time and I love doing it. I use sawdust from the timbers Lawrence milled.

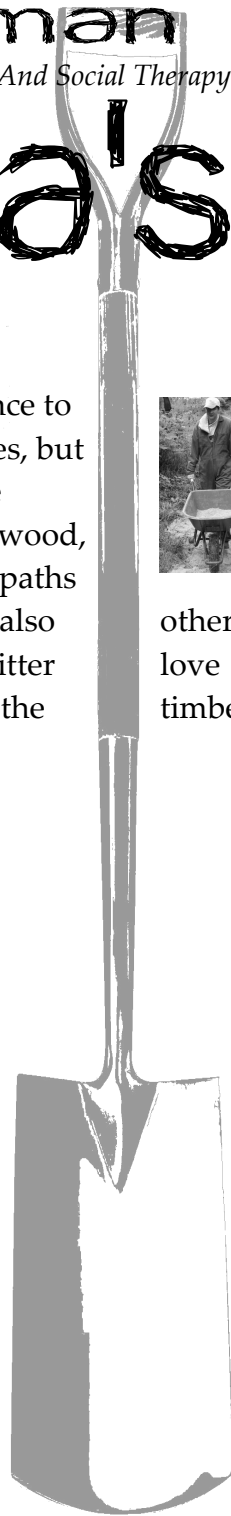
by Matthew Carr



stacking firewood near the maplesirup evaporator



the firewood tent



the ita wegman association

of British Columbia for Curative Education And Social Therapy

glenora's saga

notes from a backroom *december newsletter 2007*

November again, and once more our golden valley is shrouded in a misty darkness come 5 o'clock. Yet Glenora General Store, Café and Gas Station is a beacon in the gloom, drawing people from all over the neighbourhood, fulfilling a role that such establishments have done for generations. Now, alas, many such places are falling into demise, slowly dwindling and dying at the hands of the Superstores and Starbucks of this consumer age. Happily then, I can state positively that in the year since the Ita Wegman Association purchased the business, we have seen a complete reversal of these trends. From those trying first months (you might remember the seemingly endless slough of storms and power cuts of last year!) we have gradually built up stock, brightened the interior, and opened a café, and thus nearly tripled our original takings. It has been a steep learning curve for me, a process of trial and error, as I began to learn the pitfalls of co-managing a store, and got to know the needs of my clientele – that Export A ultra light, for example, was not the same as Export A extra light, and that, for some, the manufacturer of ginger ale is *very* important. This was indeed a new language

, and one that I had to learn promptly in order to keep our customers. Somehow, not without errors and embarrassment, we got there, and, I believe even the die-hard traditionalists are happy with the changes we have incremented over the last 12 months. Even better, with our unique selection of groceries, Katrin's herb teas, woven garb and local goods, we have attracted folk from many walks of life and corners of the world. What really makes me glad, is knowing how much the store is appreciated by all who come here. It is not simply a "five bucks o' gas stop", or a pack of smokes and a chocolate bar. It is daily bread and milk. It is too tired to cook. It is a cup of coffee or breakfast. It is a gift for the folks back in Germany, a rented movie for the kids. And for many it is a place to chat, a familiar face, and an ear to hear the trials of the day, or the problems with the car, or the local news of Glenora. This is a community store. And not just a store, it's a hub. Thank you, everyone who has supported me, especially Lynda, and my good faithful staff, who have tolerated my blunders so patiently.

Katherine

the ita wegman association

of British Columbia for Curative Education And Social Therapy

glenora's saga

the green snake and the beautiful lily *december newsletter 2007*

Inspired by the cascadia production of the fairytale in fall 2006 and as some of us have taken part in it, we decided to practice this play once a week for an hour to get an understanding for this magnificent play.

Everybody chose their part(s) but we were never enough people for the big cast.

Therefore everyone acted several parts and got a feel for each character. (just imagine Mathew and Andrew as the maidens for the beautiful lily) Tina as the old woman was hilarious and brought a lot of laughter. The rehearsals were very peaceful, concentrated and filled with enthusiasm. Together we gathered more understanding about the two worlds and the significance

of river and bridge. Once we filled out the staging in the maple grove we decided to do the play for the St Johns festival.

The companions were happy to get a commitment from some of the coworkers, the children, Mary Brian, Margret Hess, Massimo Pintus, Peter Nunn and Lynda for the costumes.

We were very grateful to Adola who helped us tremendously with props, with the river, good advice and helping Tina with her part. Together they were a matching team. We had one week to rehearse parts of the play with our full cast. We were missing the will-o-the-wisp and the only person who came to our mind who could jump into the dress rehearsal was Jeff Walls from the Cascadia Society. He did it brilliantly and added the spice we needed. The dress rehearsal was the only time we went through the whole play The performance went as well as we could do it at that point. The weather gave us a challenge and in the second part of the performance

the audience and the performers were shivering with a cold wind We dressed ourselves up with whatever we could find to keep warmer. The concentration on the play did not suffer. We did it and were thankful for all the people that participated and the audience. We had experienced our first trial of our play. We want to do it again

the ita wegman association

of British Columbia for Curative Education And Social Therapy

glenora's saga

and other stories

december newsletter 2007

and refine the understanding, and the dramatic effects. I felt honoured to have had the experience with our companions. It was their play through and through, and I felt very touched by the commitment, seriousness and enthusiasm of our people.

Thank you for this experience dear companions,

lemon cakes

I started my lemon cake and knitting business five years ago. I have finally reached my goal. This year in August I bought a double kayak. Many thanks to all my customers who bought my lemon cakes and knitting. Anybody who wants to order a lemon cake, please contact me:

snowflake_katherine@yahoo.ca

Phone number: 250-701-0796

I am now saving for a drum set

Katrin Batje



Andrew Martin



the ita wegman association

of British Columbia for Curative Education And Social Therapy

glenora's saga

the new houses

december newsletter 2007

The ground has been broken, the timberframe is raised. The roof is put on while I write this. The first house of the two we are planning to build is on it's Way. It is not a regular house in many ways. The materials we use are unusual. No 2x4's, but a framework of big beams like old fashioned barns will carry the loads of the house. The walls will not be plywood and siding, but a brick made from recycled paper and a binding agent. The main floor will have a clay finish and under floor heating. The house will be heated by a combination of systems one of them is a system that starts with the pond next to the house. From here water will be led through tubes into a shed where the little bit of warmth that the water has will be condensed into hot water by a heat exchanger (this works like a fridge in reverse). There will be a sunroom that catches the warmth of the sun. If it is a hot day we can let the heat escape, if it is a cold day we will be able to lead the heat

into the house. The house will not have many noisy appliances in it: the washing machines and the heating system are not in the house. This will keep it nice and quiet.

The first house should be ready end of next spring if all goes according to plan . Then the new inhabitants can move in. There will be space for a family, 3 companions and 2 co-workers. On the next page is a picture of the preliminary drawings to get an idea what the down stairs will look like The 2nd floor will have the area for the houseparents and bedrooms. The loft has 2 more rooms. No picture from those floors, you just have to come and see the house when it is finished.

We are getting very excited. Anybody who comes to visit should have a look at the progress. Hopefully both houses will be finished by the time there will be a new newsletter!

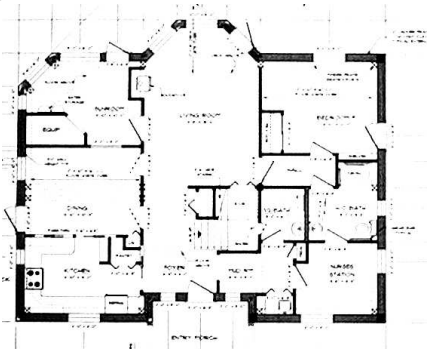
Joost

the ita wegman association
of British Columbia for Curative Education And Social Therapy

glenora's saga

the new houses

december newsletter 2007



The preliminary layout of the ground floor of one of the new houses (small changes will happen)

At Glenora Farm in Duncan B.C. there are 2 new houses getting built. People from around the world have signed up to live in them. They are small, not big, but with a down and upstairs.

I have been currently living in the main house, I would like to have some independence and I have signed up to live in a beautiful new house near the forest! A pretty place. Move out of the main house, I am getting very excited. There is also one getting built by the driveway opening.

Faith Sechely



the raising of the frame



the utility building

the ita wegman association

of British Columbia for Curative Education And Social Therapy

glenora's saga

coworker experiences

We, Raphaela, Frank from Germany (where most co-workers are from) thought it would be interesting for potential co-workers (and of course for everybody else) to know how a co-workers life is at Glenora Farm.

We live together with our houseparents (Joost and Kara), their children (2 and 8 years old), two ladies with special needs and a 22 years old guy from the states in a nice house in Duncan. We arrived almost at the same time two and a half months ago.

We came to this place a little worried and curious at the same time. Worried because of the language, the tasks, how community life will be and if we will find a place in this community. Curious about new experiences in a foreign country. And of course of the beautiful landscape of Canada which we always connected with this country. Now we can confirm. It really is!

We have never been so far away from home and for such a long time before. But from the first day on we felt welcomed.

Soon we were integrated in the daily life

december newsletter 2007

and we took over responsibilities. Besides working together with the companions at the farm in different workshops for instance chopping firewood, gardening, harvesting, crafts and cooking we live together with companions in a care home. That includes all the daily tasks in a household to afford a "normal" life. In the leisure time we often do activities together. Living in a house and working at the farm with so many people all having different personalities and interests means a lot of interaction and it also comprehends many funny situations. But it is also a challenge to live together with so many different individuals. Finally we can say we had an amazing time at Glenora Farm till now and we would encourage everybody who is considering coming just to come as a co-worker to Glenora Farm.



Frank and Raphaela

the ita wegman association

of British Columbia for Curative Education And Social Therapy

glenora's saga

looking into my short term past

and the future (a letter)

december newsletter 2007

Mostly since Charles left the physical plain, I traveled, starting with my trip to Russia in 2001, under Monica Gold's auspices. It was an amazing experience, not always joyful. I walked the Camino-Francese from St. Jean Pied de Port in the low Pyrenees to Santiago de Compostella across the north of Spain (east-west) in 2005. This walk united me with the stars above and the earth with its four elements below. On the map this stretch is just 500 miles, but for my feeling I walked around the globe, embracing the whole earth. Also I became more aware of my humanity and of what was truly human in my co. pilgrims.

In 2002 I visited the isles de la Madeleine in the gulf of St. Lawrence with some of my family; like St Exupery I experienced wind, sand and stars, but also sun and water. As to my real 'work', I was guided by a special star that most enlightened me in my understanding of problem children in Waldorf schools. This gave me the opportunity to pay off my debt to the dozens of children with special needs who have been my teachers since I was 20. I truly thank all those children I have ever worked with because of them I could attempt to help teachers in their work with some of their challenged children. All this required a lot of traveling. I also owe my thanks to Charles for accompanying me in my work and protecting me from the other side. This year, starting last September, I have decided to give my travels a brake. It seems to me a new star has arisen above my horizon. It inspires me to turn towards our staff children and their friends and to offer them something special every second Sunday. I have a group of Glenorians around me to support me in this effort. Hans (from Denmark) carries this work with me. Our first circle meeting with the group of children, that came towards us was before the summer holidays as an upbeat. We now dream of the possibility to bring about a structure that could house this initiative. I have opened up a savings account at the royal bank hoping to collect enough funds for this 'dream' project. Is there anyone among you willing to contribute financially, with ideas of possible designs, manpower, materials, advise?? We are planning an Easter camp with the children to start on this project. Most of my life up until now has been dedicated 100% to the special needs children and later also adults. But the children that are born into our community deserve their share also.

With my warmest and sincerest christmas and seasonal greetings. Yours truly, Adola

the ita wegman association

of British Columbia for Curative Education And Social Therapy

glenora's saga

newsletter info

december newsletter 2007

newsletter from the ita wegman association

this newsletter is produced to inform friends and other interested people of what happens within our community. Our community is a place where we live and work together with people of all levels of special needs



○ Design and editors: Joost and Oliver

○ pictures and graphics: Joost

○ printing: Lynda Phelps

○ Contact information: itaweg@shaw.ca

○ Articles and notes that list no author are written by Joost who also took the liberty to impersonate our dearly beloved lama: Saga (appologies if I have not represented your point of view correctly dear Saga)

○ Poems were offered by Alex and Faith

○ Thanks to all who contributed to this newsletter.

if you would like to receive this news letter by email, let us know: itaweg@shaw.ca